

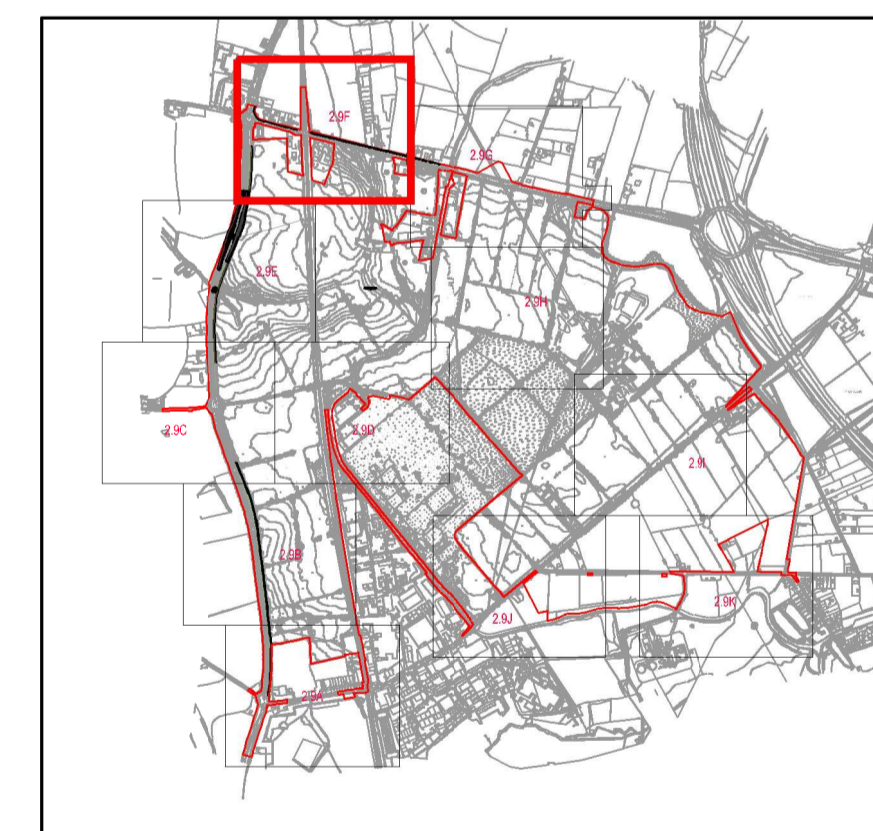
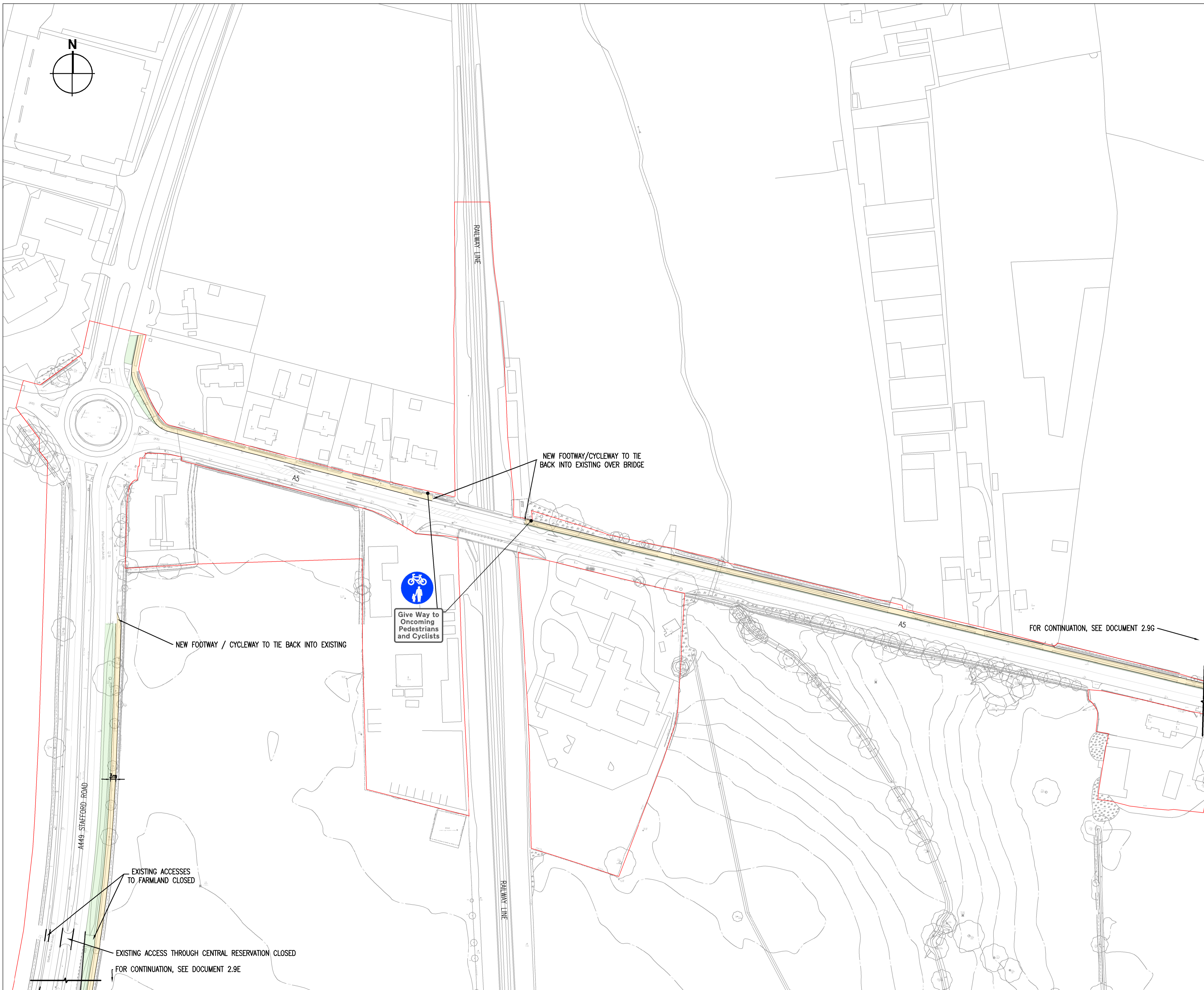
- KEY
- ORDER LIMITS
  - FOOTWAY / CYCLEWAY
  - VERGE / GRASS

NOTES:

LIMITS OF DEVIATION SHOWN ON THE WORKS PLANS (DOCUMENT SERIES 2.2) AND SET OUT IN ARTICLE 4 OF THE DEVELOPMENT CONSENT ORDER.

CHANGES MADE TO DOCUMENT 2.9F SINCE DCO SUBMISSION:

- MAY 2019 -
- ADDITIONAL GIVE WAY SIGN TO BE ADDED TO CYCLEWAY OVER RAIL BRIDGE IN RESPONSE TO COMMENTS FROM HIGHWAYS ENGLAND IN THE RSA.



Project <b>THE WEST MIDLANDS RAIL FREIGHT INTERCHANGE ORDER 201X</b>	
Drawing Status <b>SUBMISSION</b>	
Drawing Title <span style="float: right;">Drawing Size A1</span> <b>GENERAL ARRANGEMENT PLAN 106</b>	
Regulation <b>5 (2) (o)</b>	Document <b>2.9F</b>
Drawn NW Date: JUNE 2018	Scale 1: 1000
Reviewed JF	Rev <b>G</b>
Drawing No. <b>WSP-70001979-GA-106</b>	